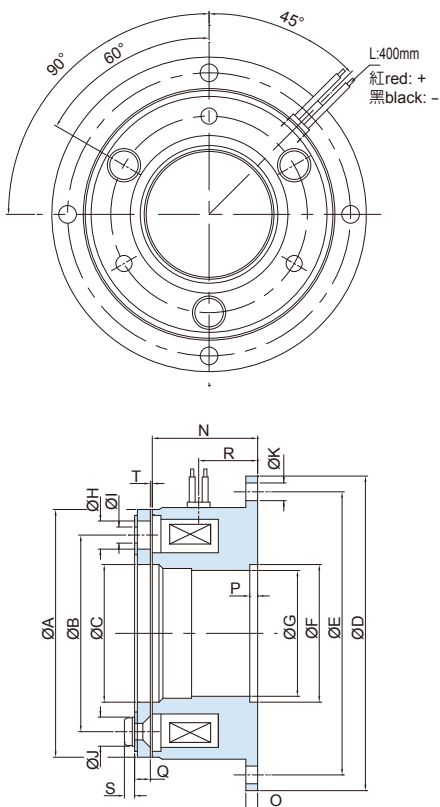


CPB Series

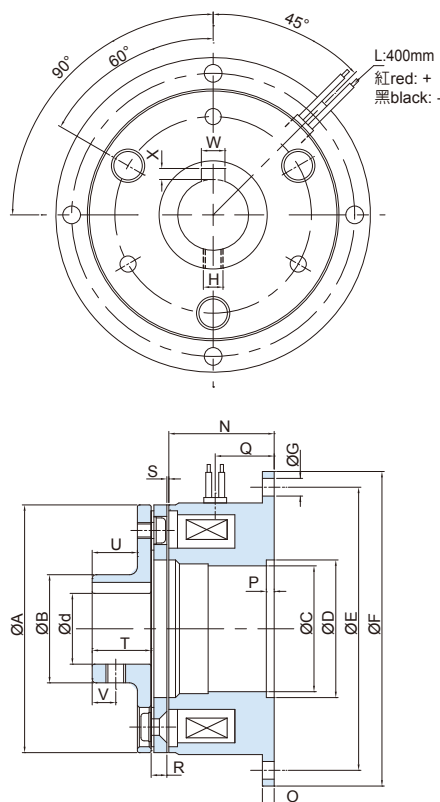
永磁式煞車器 Permanent Magnet Brake



型號 Model	CPB0S1AA	CPB0S2AA	CPB0S4AA	CPB0S9AA	CPB1S8AA	CPB3S5AA	CPB007AA
靜摩擦扭力 Static torque Kgm (Nm)	0.1 (1)	0.2 (2)	0.4 (4)	0.9 (9)	1.8 (18)	3.5 (35)	7 (70)
功率 Power [24V] (W)	10	11	12	18	24	36	72
徑方向 Radial	A	32	40	50	63	100	125
	B	23	30	38	50	60	95
	C	12.5	19	25.4	35	41.8	52
	D	45	54	65	80	100	125
	E	38	47	58	72	90	112
	F	12.5	19	26	35	42	52
	G	-	-	24	32	38	48.5
	H	6	6	7	10	8	12
	I	2.6	3.1	3.1	4.1	4.1	5.1
	J	5	6	6	7.5	7.5	8
軸方向 Axial	K	3.4	3.4	3.4	4.5	5.5	6.3
	N	21.5	22.5	28.5	26.8	29.9	33.9
	O	2	2	2	3	3	4
	P	-	-	1.8	2	2	2.5
	Q	2.1	2.6	3	4	4.5	6.4
	R	10.5	12	14	15	16.5	19.5
	S	2	2.5	2.5	2.5	2.5	3
	T	0.15~0.25	0.15~0.25	0.25~0.35	0.25~0.35	0.25~0.35	0.25~0.35

PB1 Series

永磁式煞車器附凸輪 Permanent Magnet Brake with Hub



型號 Model	PB10S1AA	PB10S2AA	PB10S4AA	PB10S9AA	PB11S8AA	PB13S5AA	PB1007AA
靜摩擦扭力 Static torque Kgm (Nm)	0.1 (1)	0.2 (2)	0.4 (4)	0.9 (9)	1.8 (18)	3.5 (35)	7 (70)
功率 Power [24V] (W)	10	11	12	18	24	36	72
徑方向 Radial	A	32	40	50	63	80	100
	B	15	17	24	27.5	31	41
	C	-	-	24	32	38	48.5
	D	12.5	19	26	35	42	52
	E	38	47	58	72	90	112
	F	45	54	65	80	100	125
	G	3.4	3.4	3.4	4.5	5.5	6.3
	H	M3	M4	M4	2-M5*150°	2-M5*150°	2-M6*150°
軸方向 Axial	N	21.5	22.5	28.5	26.8	29.9	33.9
	O	2	2	2	3	3	4
	P	-	-	1.8	2	2	2.5
	Q	10.5	12	14	15	16.5	19.5
	R	2.1	2.6	3	4	4.5	6.4
	S	0.15~0.25	0.15~0.25	0.25~0.35	0.25~0.35	0.25~0.35	0.25~0.35
	T	10	12	12	15	20	25
	U	7	9.5	9	11.5	16	20
	V	4	5	5	6	8	10
	鍵槽 Keyway	W	3	3	5	6	8
X		1.4	1.4	2.3	2.8	2.8	3.3
孔徑 Bore	d	8	10	15	18	20	30